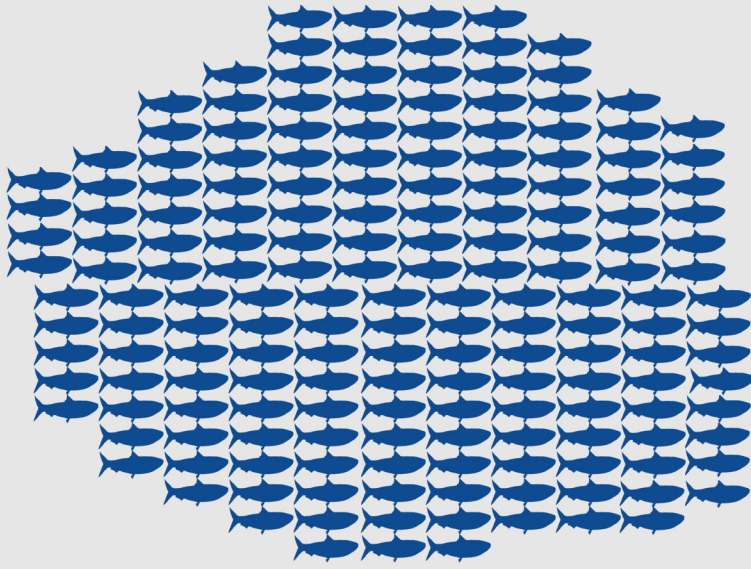


PACIFIC SARDINE POPULATION HAS COLLAPSED AND THE POPULATION IS NOT REBUILDING



2006

~1.6 million metric tons

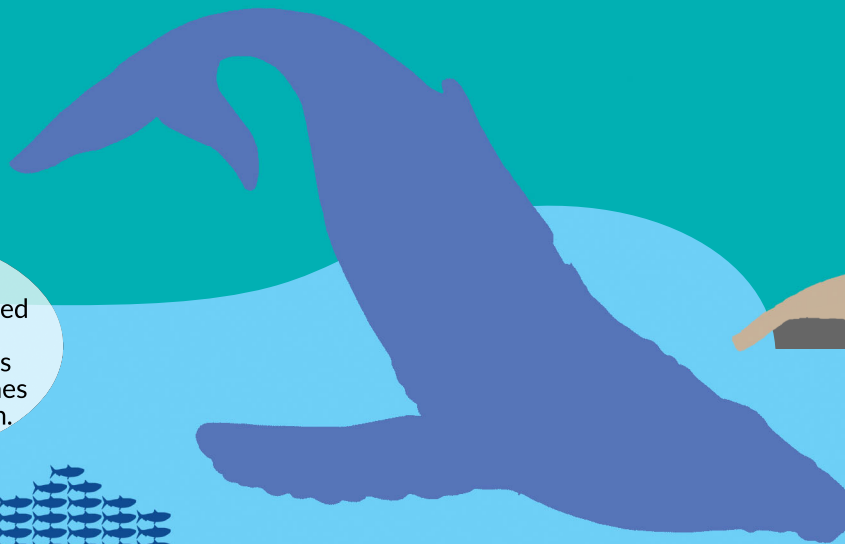
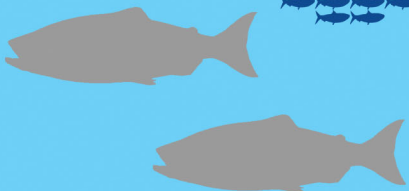
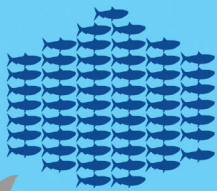
2020

~28,000 metric tons

OCEAN ANIMALS **DEPEND ON A HEALTHY** SARDINE POPULATION

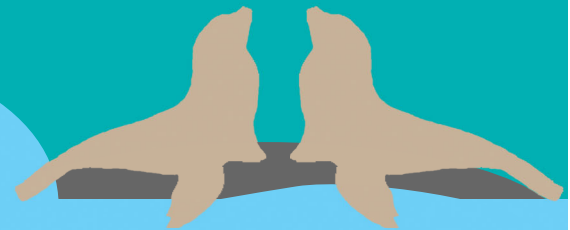


From 2010-2015, brown pelicans suffered unprecedented reproductive failures due to a lack of sardines and other forage fish.



Whales eat more than 75% of all sardines consumed by wildlife. Humpback Whale Critical Habitat designated in 2021 identifies Pacific sardine as essential prey.

More than 9,500 starving California sea lion pups and yearlings washed up on beaches from 2013-2016.



Pacific sardine became very important prey for threatened and endangered runs of Chinook salmon in the 2000s.

