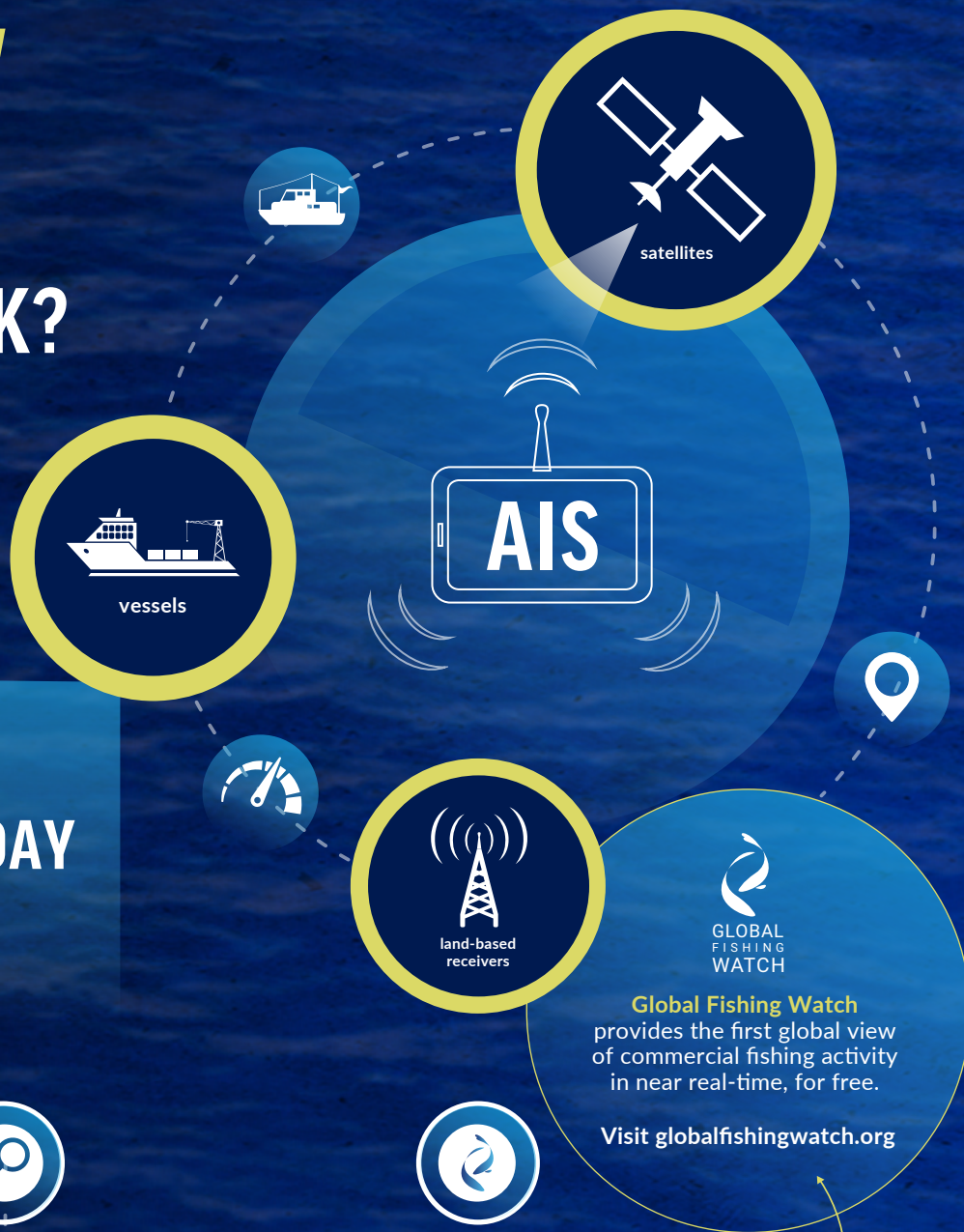


# HOW

## DOES AIS WORK?

AIS devices automatically send a ship's **direction, speed, location and identification** information to other AIS devices, land-based receivers and satellites as frequently as every...

**2-30 SECONDS**  
**UP TO 43,200x A DAY**



**Global Fishing Watch** provides the first global view of commercial fishing activity in near real-time, for free.

Visit [globalfishingwatch.org](http://globalfishingwatch.org)

### PUBLIC

The AIS transmissions are **public and provide data** of vessel locations around the world

### TRANSPARENT

Vessels using AIS broadcast their **whereabouts and identity**

### EFFECTIVE

**Global Fishing Watch** uses this data to show the public when and where vessels are likely fishing worldwide